

MONADNOCK SUSTAINABILITY HUB



Community Power for New Hampshire

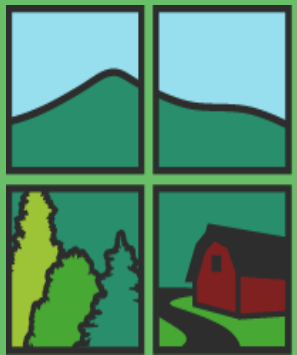
Towns



SWRPC



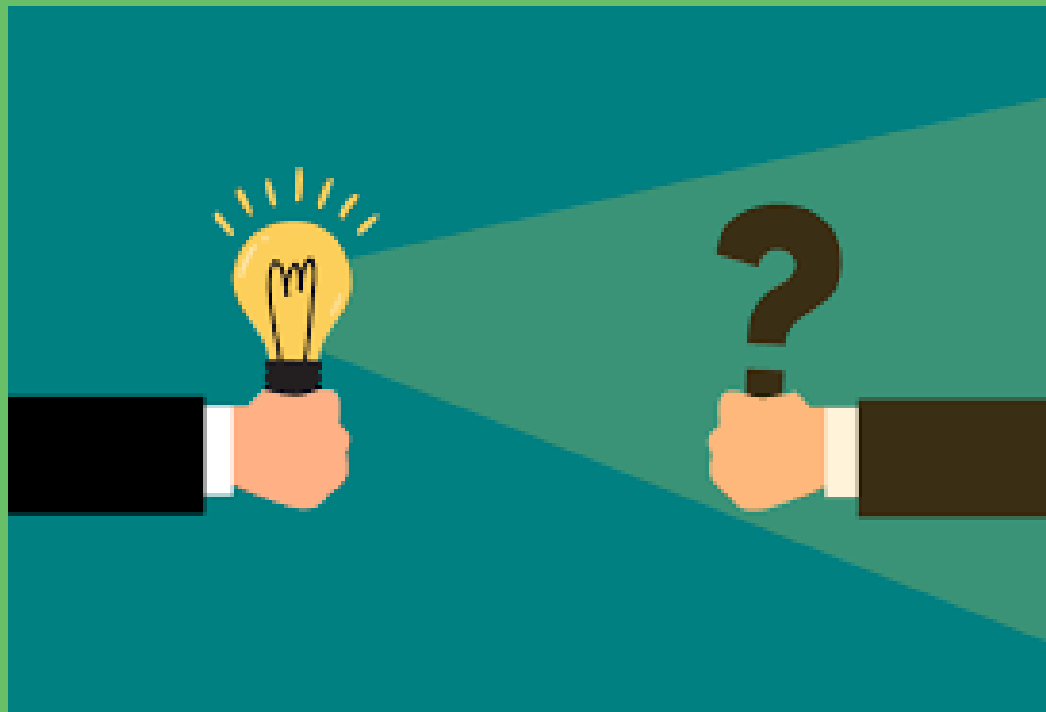
The Hub is a catalyst for energy and climate solutions in the Monadnock region. We work collaboratively to transition the region to 100% renewable energy by 2050.



SWRPC

Promotes sound decision-making for effective management of the region's natural, cultural and economic resources. Provides technical assistance and regional coordination to its 34 member communities.

A Few NH Facts*:



- 4th highest average retail price of electricity paid by the residential sector (April 2023)
- 1 of only 8 States where residential sector is the largest energy consumer
- Reliance on fuel oil as primary heating source is about 10 times greater than national average

* Source: U.S. Energy Information Administration

What is Community Power?

In its most basic form, Community Power allows local governments to:

- buy electricity in bulk
- for their residents and businesses
- from electrical suppliers at wholesale rates



Town Hall

Residence



What *Changes* with Community Power?



Supply



Town's plan becomes the power supplier on residents' utility bills.

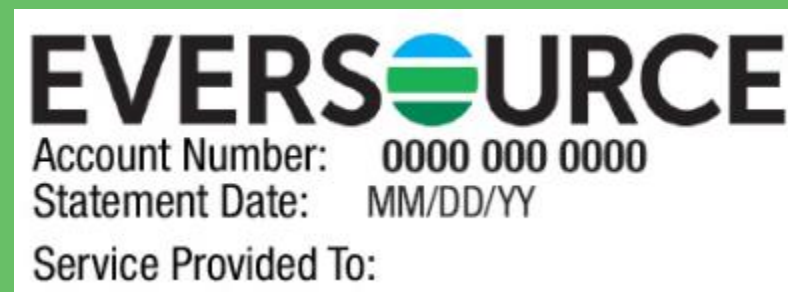


Resilience, Renewables,



Towns can choose electricity mix, and billing features can support local energy projects.

Billing



Residents continue to receive a familiar-looking bill from their usual utility.

Poles and Wires



Utilities still own and maintain poles and wires.

Why Choose Community Power?

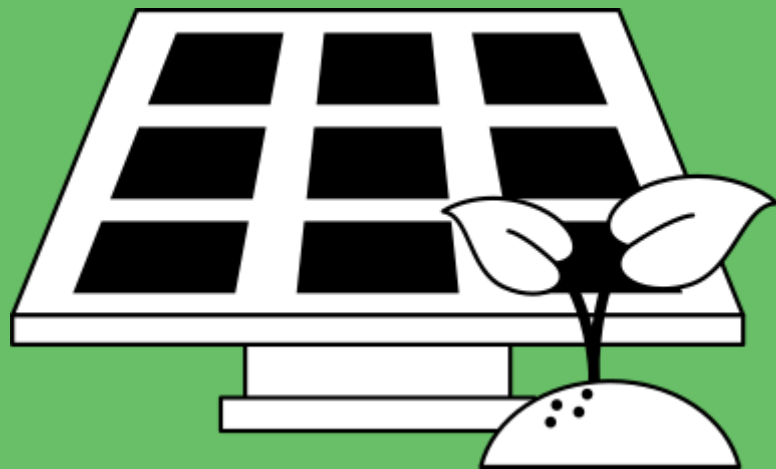
Local Control



Lower Pricing



Renewable Energy



Value Added Services

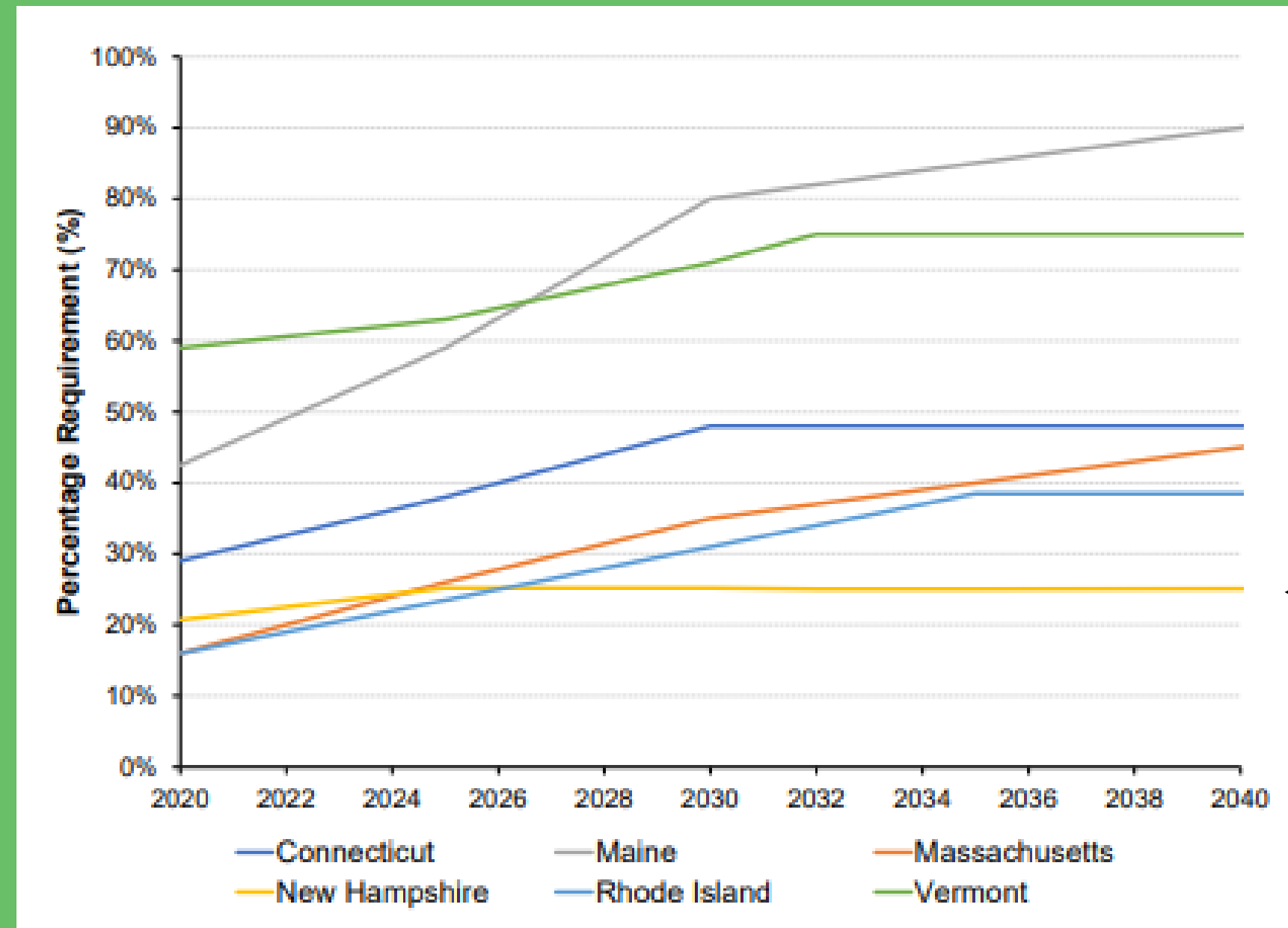


Examples of Value Added Services



- Investment in Local Renewable Energy
- Energy Efficiency for Low-Income Homes
- Batteries for Resilient Communities

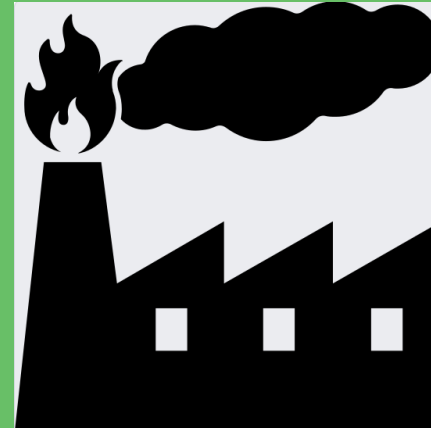
State Renewable Portfolio Standards



← New Hampshire

Community Power and Renewables

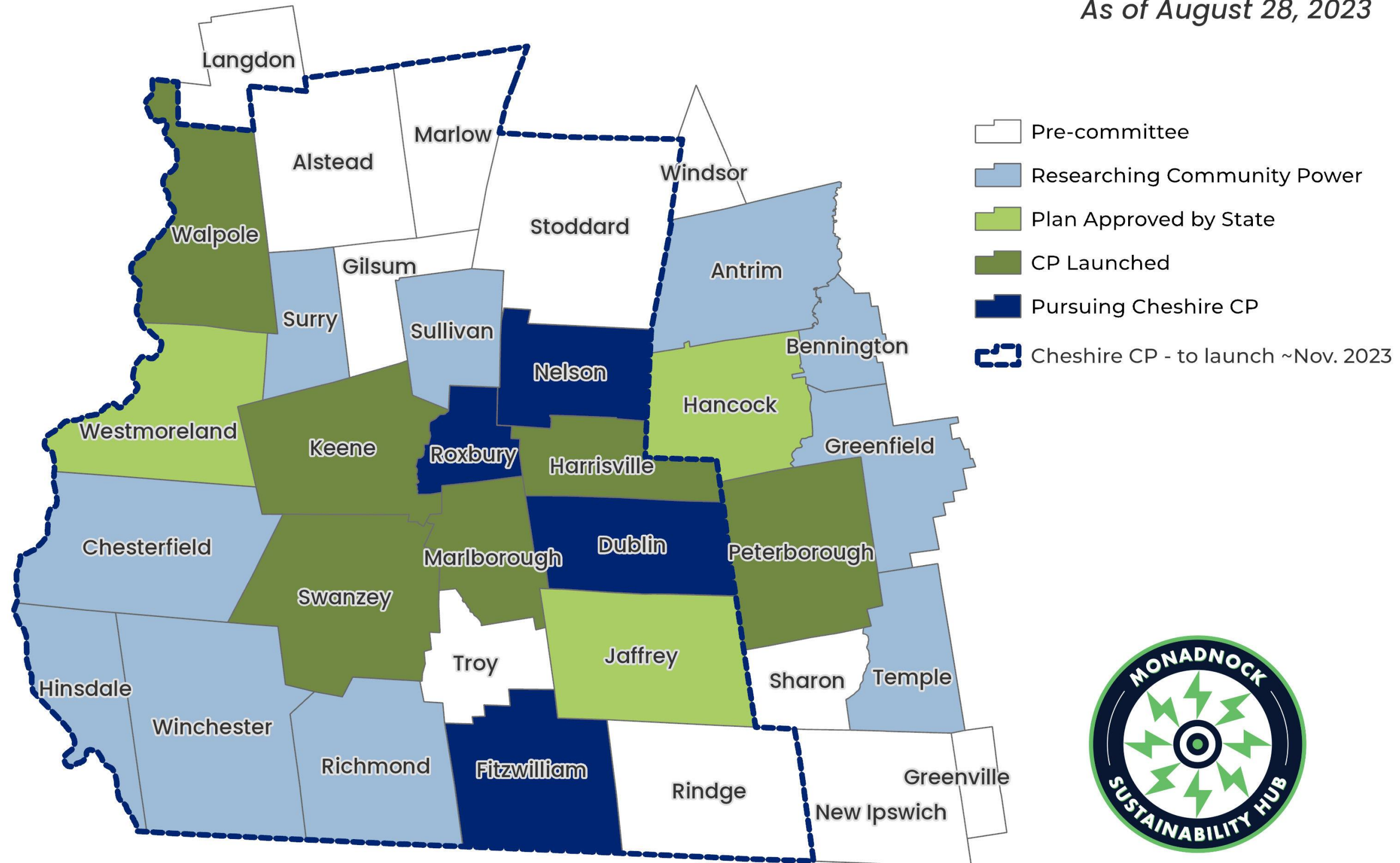
- State renewables target - 25.2% (2025)
- Towns can promote renewables by choice of default
- Revenue can fund new renewable energy projects
- New local power supply can further reduce ratepayer costs



**Choices lie with the town, and can be guided by
Town's goals and residents' values**

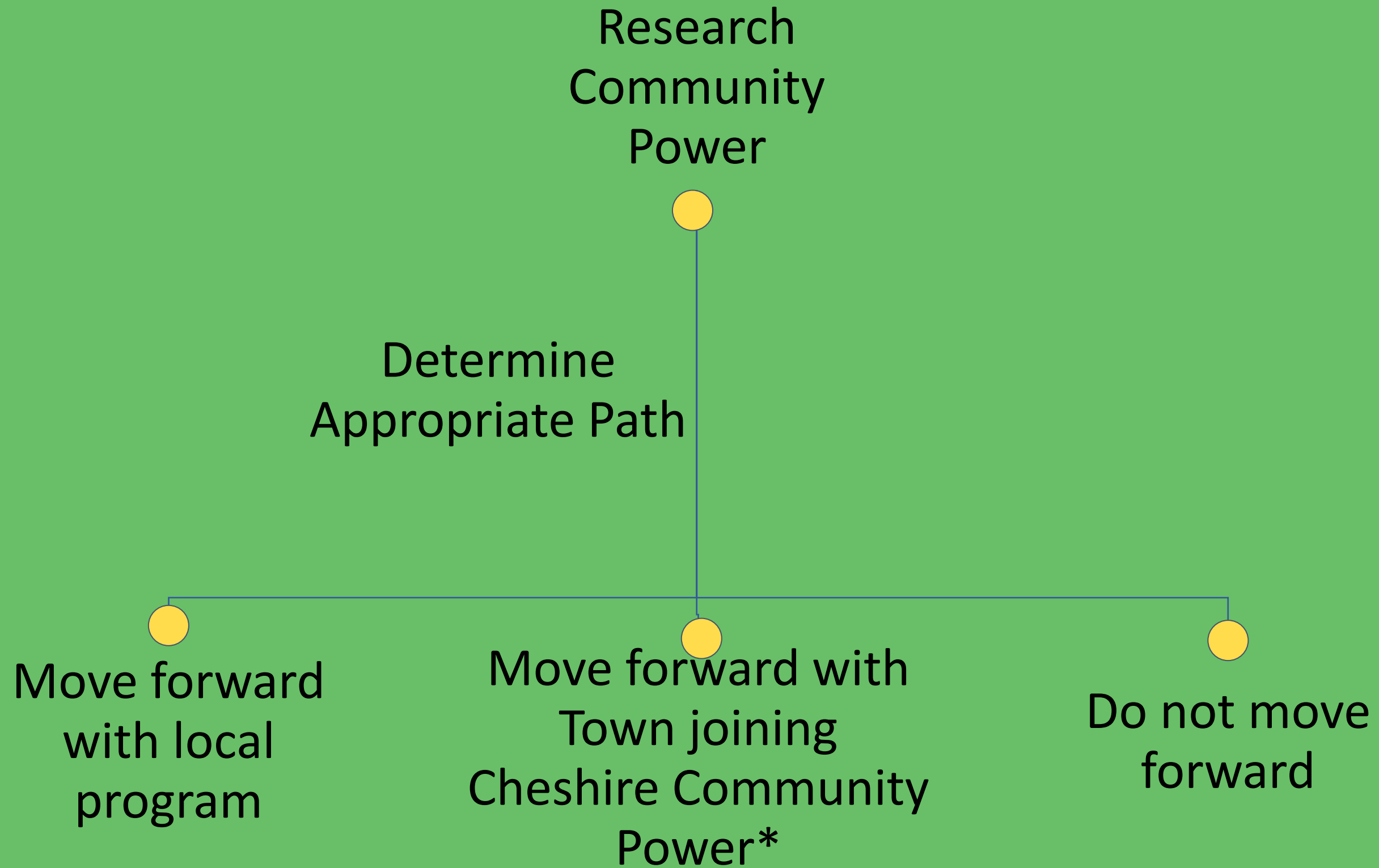
Community Power in the Monadnock Region

As of August 28, 2023



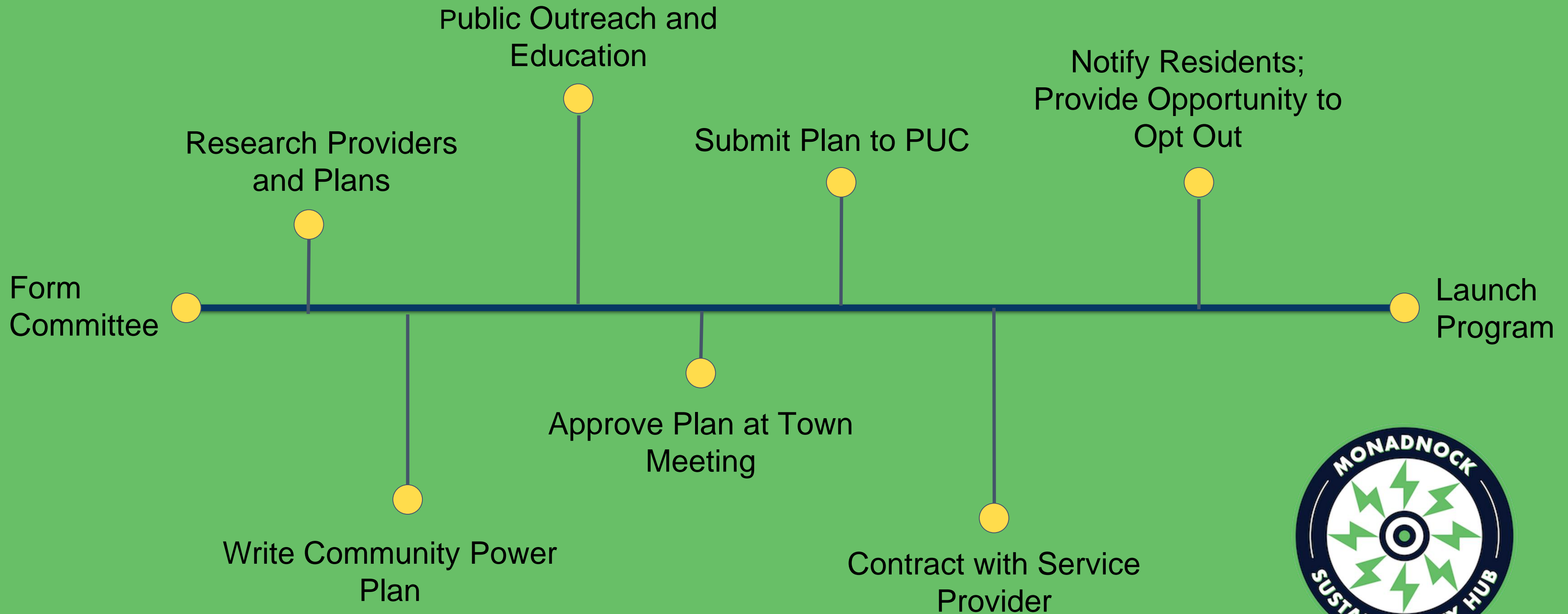
SWRPC

How to Start Out



*Available to Cheshire County Towns Only

Key Action Steps



Cheshire County Community Power



- Towns in Cheshire County may adopt the County's Community Power Aggregation Plan by a majority Select Board vote
- Plan is already approved by Public Utilities Commission, likely to launch in Fall 2023
- Residents of towns joining the plan can opt out
- Residents in towns without membership can join individually (opt in)
- Use of the Reserve Fund will be determined by group of representatives from member towns

Service Providers

Towns can partner with **Commercial Brokers** or a **Nonprofit Agency** for planning, resident outreach and to implement Community Power.

Brokers: **Standard Power/Good Energy**

Freedom Energy Logistics/Colonial Power

Nonprofit: **Community Power Coalition of New Hampshire**

Before Launch

Residents & businesses on the default utility plan are notified & given the opportunity to opt up, down or out before plan launches.



Those who don't opt out/down/up will get the new plan's default choice on their electrical bills, automatically.

August 1, 2023 - January 31, 2024
Residential, General Service, Outdoor Lighting

Renewable Content	Power Options	Rate (¢/kWh)	Estimated Cost*	6-Month Savings
100%	Clean 100	15.2 ¢	± \$91 / month	Clean Premium
50%	Clean 50	12.3 ¢	± \$74 / month	± \$6
33%	Granite Plus <i>(Default Power)</i>	11.3 ¢	± \$68 / month	± \$42
23.4%	Granite Basic	10.9 ¢	± \$65 / month	± \$60
23.4%	Eversource	12.582 ¢	± \$75 / month	N/A

2023 Launches

- At launch, all options in all towns' plans saved customers money compared to Eversource default supply

Plan	Default % Renewables	Default supply cost (cents/kWh)	Opt-up 50% price (cents/kWh)	Opt-up 100% price (cents/kWh)
Eversource	23.4	12.6	N/A	N/A
Walpole, Harrisville	23.4	10.9	12.3	15.2
Peterborough	33	11.3	12.3	15.2
Keene, Marlborough, Swanzey	33	11.5	12.1	13.9

- Very few residents/businesses opted for different choice than plan default
- Contract differences exist, such as whether or not energy prices change over period

Service Providers

Brokers:

Standard Power/Good Energy:

Bob Hayden

b.hayden@standardpower.com

Colonial Power/Freedom Logistics

Stuart Ormsbee

sormsbee@colonialpowergroup.com

Non-profit:

Community Power Coalition
of New Hampshire

(CPCNH) Henry Herndon

henry@cpcnh.org

Cheshire Community Power

Terry Clark

tclark@co.cheshire.nh.us

Questions??



SWRPC

Contact:

Nora E. Hanke, Program Manager, MSH

nhanke@monadnockustainabilityhub.org

Jason Cooper, Planner, SWRPC

jcooper@swrpc.org